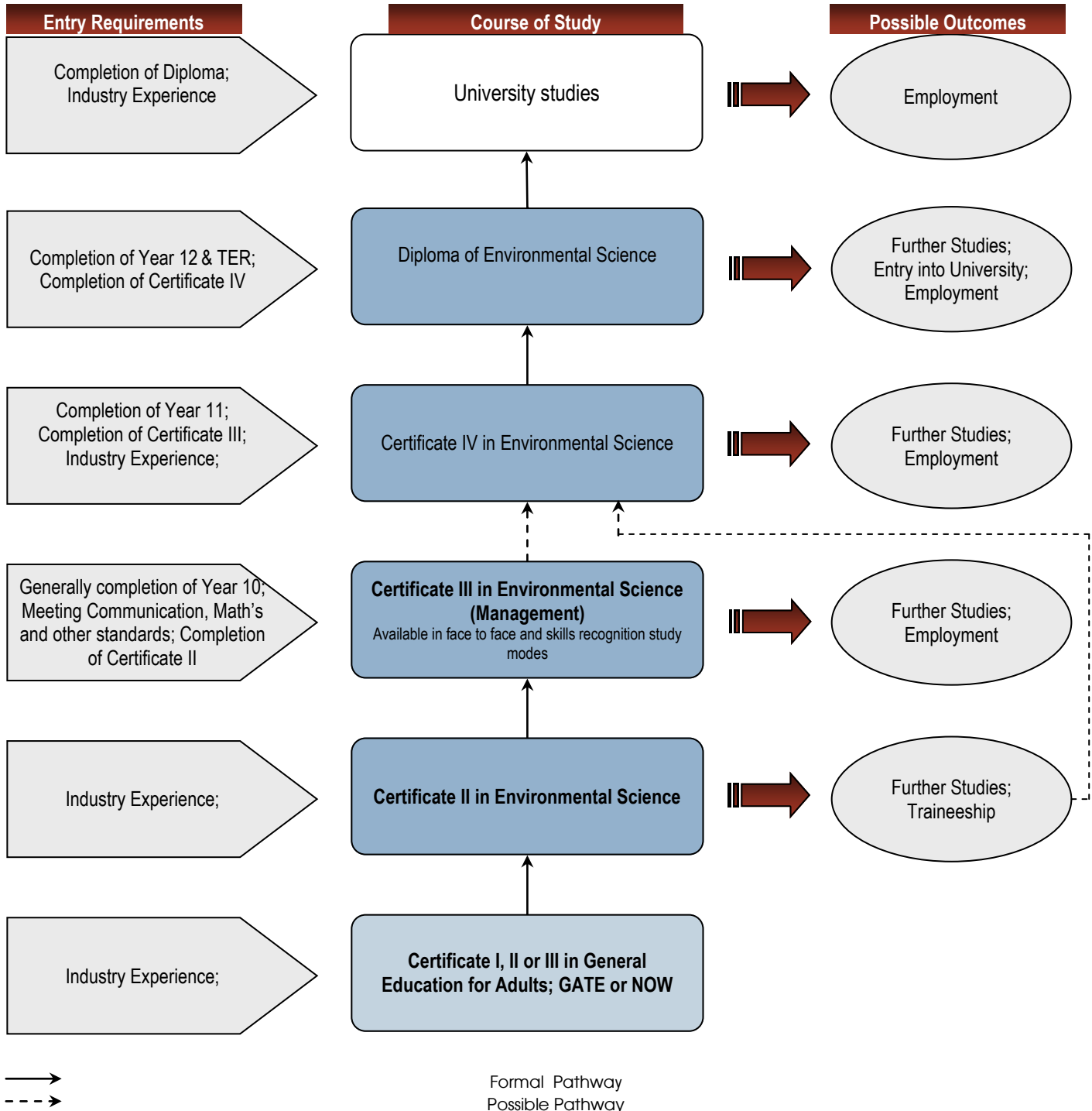


Interested in a career in the Environmental Science field?

This qualification will provide you with the skills and knowledge to be able to assist environmental staff in the management of a range of environmental issues, including simple monitoring and revegetation activities. You will also gain an appreciation of some of the environmental issues experienced within Australia, Western Australia and at a local level.

The employment opportunities available within the industry include roles such as:



Note: There are multiple entry and exit points that you can start and finish at throughout your studies.

Note: an alternative to this training course may be "Sampler", please refer to relevant pathway documentation

Key/ legend

Bold font– indicates that the training program is offered at Durack Institute of Technology

What are the entrance requirements?

Entrance requirements are the lowest level of school results you need to be allowed into a full-time course at TAFE.

Entrance requirements will be either:

A lower level qualification, for example, to enrol in a Certificate IV in Disability Work you need a Certificate III in Disability Work

OR

Communication skills and if required math skills

The level of communication and math skills required for entry to a course will be measured according to the following scale:

- Basic skills
- Developed skills
- Well Developed skills
- Highly Developed skills