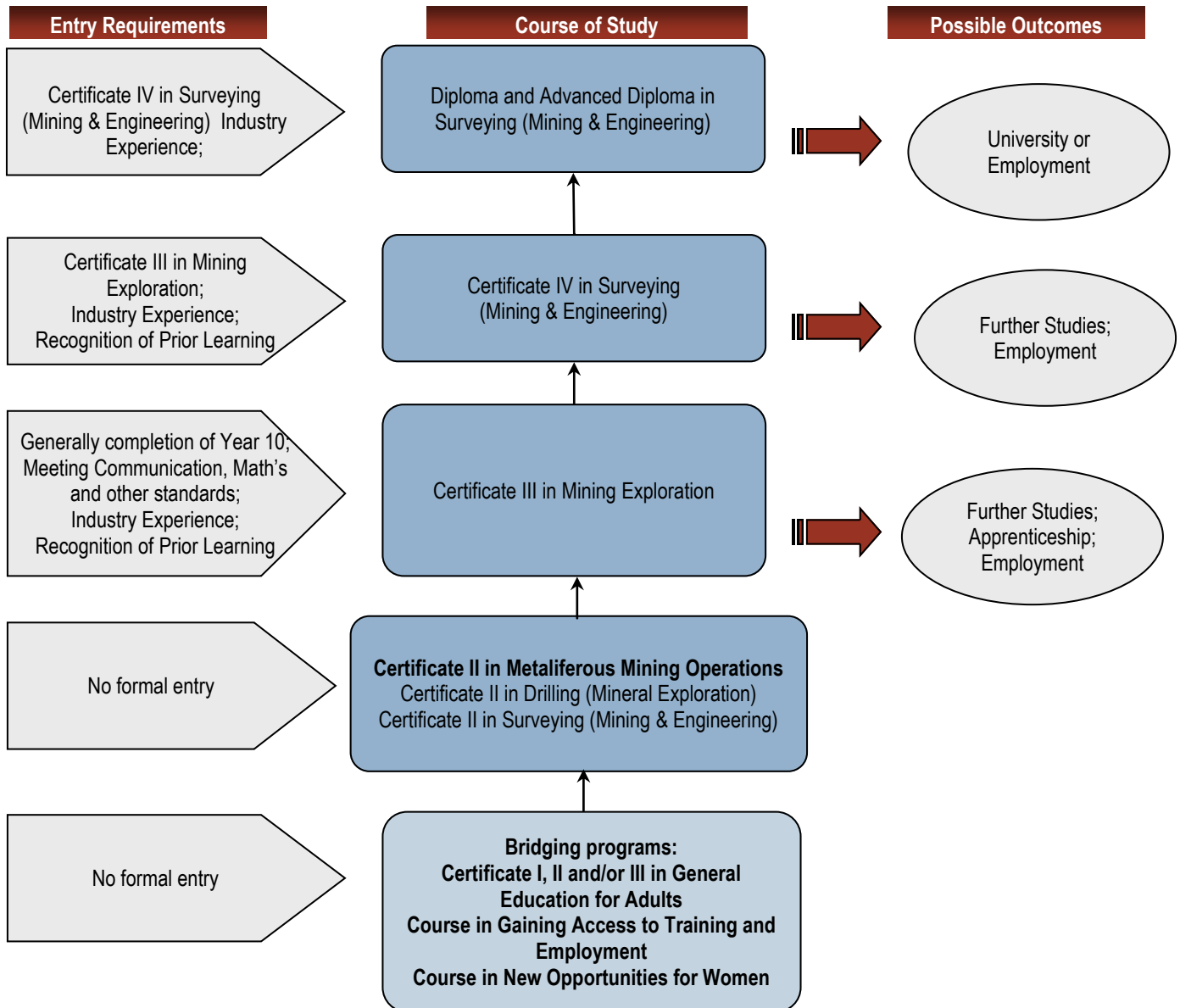


Interested in a career in the Mining industry?

The employment opportunities available within the Metal Fabrication industry include roles such as:
Operator in an open cut mine; Pit Technician; Underground Sampler; Survey Assistant; Survey Technician or a Surveyor.

The following shows how you can achieve your goal and the various pathways that you can take.



Note: There are multiple entry and exit points that you can start and finish at throughout your studies.
Note: an alternative to this training course may be "Automotive or Welding", please refer to relevant pathway documentation.

Key/ legend

Bold font– indicates that the training program is offered at Durack institute of Technology

What are the entrance requirements?

Entrance requirements are the lowest level of school results you need to be allowed into a full-time course at Durack Institute of Technology.

Entrance requirements will be either:

A lower level qualification, for example, to enrol in a Certificate IV in Disability Work you need a Certificate III in Disability Work

OR

Communication skills and if required math skills

The level of communication and math skills required for entry to a course will be measured according to the following scale:

- Basic skills
- Developed skills
- Well Developed skills
- Highly Developed skills